



ES PRO Controller User Manual

USB-C Port:

For charging & wired connection.

Indicator Light:

Orange - Charging
Green - Fully charged
Flashing light - Pairing mode
Solid White - No custom settings configured
Solid Blue - Custom settings configured

Home Button:

Press to power on
Press and hold to power off

Setting Button

Pairing Button:

Press and hold to enter pairing mode

Slide switch to change controller mode

Power-Off Button:

The controller will automatically power off after 15 minutes of inactivity. When connected via USB or Auto-Continuous Fire (Turbo) is active, the controller will not power off.



CAUTION!

This product contains small parts (such as buttons, joystick caps, and screws) that may pose a choking hazard if swallowed by children.

Joysticks Calibration

While the controller is powered on, press and hold the "L," "R," "D-pad Left," and "B" buttons simultaneously for 6 seconds to enter calibration mode.

During calibration, rotate both the left and right joysticks in full circles 2 to 3 times.

Once calibration is complete, the controller will vibrate once to indicate success and will automatically exit calibration mode.

Gyroscope Calibration

While the controller is powered on and placed on a flat surface, press and hold the "+", "-", "D-pad Left", and "B" buttons simultaneously to initiate automatic gyroscope calibration.

Once calibration is complete, the controller will vibrate once to indicate success.

**Note: Calibration is not necessary when the gyroscope is functioning normally.*

Pairing Methods with PC

1. Bluetooth Pairing - 730Hz Polling Rate:

(Requires the computer to have Bluetooth functionality)

- Switch the controller to PC mode. Then press and hold the pairing button for 2 seconds until the indicator light begins flashing rapidly, indicating that pairing mode has started.
- On your computer, open the Bluetooth settings, search for new devices, and select "GuliKit XW Controller" to pair.
- Once the interface displays "Connected", the pairing is complete.

2. Wired Connection - 1000Hz Polling Rate:

Set the controller to PC mode. Connect one end of the USB-C to USB-A data cable to the controller, and insert the other end into a USB-A port on your computer.

If you're using a desktop computer, it is recommended to use one of the USB ports on the back of the computer case for a more stable connection.

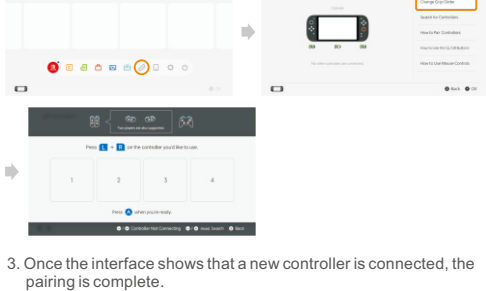
Wireless Pairing with Android Devices

- Set the controller to PC mode.
- Press and hold the pairing button for 2 seconds until the indicator light starts blinking quickly, indicating that pairing mode has been activated.
- On your phone, go to Bluetooth settings, search for new devices, and select "GuliKit XW Controller".
- The interface displays "Connected" to the new controller, indicating that the pairing is complete.

Pairing Methods with Switch / Switch 2

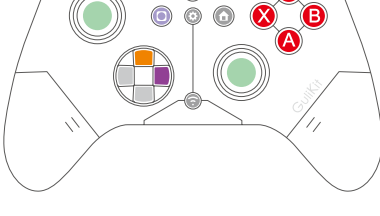
- Set the controller to NS mode, turn it on, then press and hold the pairing button for 2 seconds. The indicator light will blink quickly, indicating that pairing has started.

- When the Switch / Switch 2 is on the black screen (sleep) state, press the HOME button on the Joy-Con to wake it up. It will then enter the controller pairing interface, as shown below.



- Once the interface shows that a new controller is connected, the pairing is complete.

All customized settings mentioned below require holding the Setting button while pressing the corresponding buttons. When customized settings are configured, the indicator light will turn blue. When no customized settings are configured, the indicator light will remain white. When the battery is low, the indicator light will flash, and the vibration function will automatically turn off. Once the battery level is restored, vibration will turn back on automatically.



+ Clear All Settings (Reset)

Long vibration: Indicates that the reset process is complete and the controller has been restored to its default settings.

+ Joystick Dead Zone Setting

One vibration: Dead zone enabled on joysticks.

Long vibration: Dead zone disabled on joysticks (Default).

+ Continuous Fire (Turbo) Setting

One vibration: Manual Turbo Mode - Continuous fire is activated while holding the button and stops when released.

Two vibrations: Auto Turbo Mode - Press the button once to start continuous fire, and press it again to stop.

Long vibration: Disables both manual and auto turbo modes. (Default)

+ A-B X-Y Button Swap

One vibration: Swaps the input functions of the A-B and X-Y buttons.

Long vibration: Restores the default button assignments. (Default)

+ Adjust Vibration Intensity

One vibration: Weak vibration.

Two vibrations: Standard vibration. (Default)

Three vibrations: Strong vibration.

Long vibration: Turn off vibration.

+ Adjust Joystick Sensitivity

One vibration: Sensitivity 50%.

Two vibrations: Sensitivity 100%. (Default)

Three vibrations: Sensitivity 150%.

Note: "R3" and "L3" refer to pressing down on the right and left joysticks, respectively. Each joystick can be configured individually.

+ Set 4-Direction Mode on D-Pad

One vibration: Switches the D-pad to 4-direction mode.

Long vibration: Restores the default 8-direction mode. (Default)

+ Adjust Motion Aim Assist for PC FPS Games

One vibration: Low-sensitivity aim assist.

Two vibrations: Medium-sensitivity aim assist.

Three vibrations: High-sensitivity aim assist.

Long vibration: Motion aim assist disabled. (Default)

Button Activation Settings:

+ L: Motion assist activates while holding the L button in-game.

+ ZL: Motion assist activates while holding the ZL trigger in-game.

For more questions & answers, you can visit the website and navigate to the "Support" section and look for the "Frequently Asked Questions" (FAQ) related to the controller.

